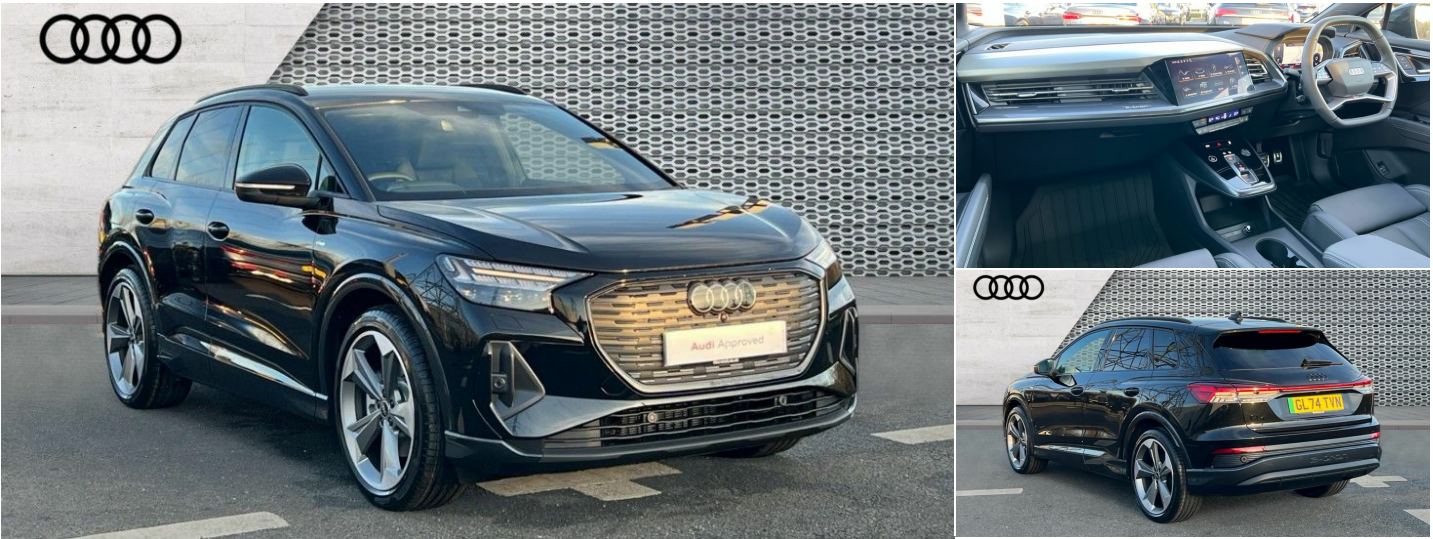


2024(74) Audi Q4

£41,780

Audi Black Edition 45 e-tron 210,00 kW Automatic



Registered
2024(74)



Mileage
3,193 miles



Engine Size
N/A



Fuel Type
Electric



Transmission
Automatic



Fuel Consumption
N/A

Description

Adaptive cruise control with speed limiter, Advanced driver attention and drowsiness monitor, Audi application store, Audi connect safety and service (e-call), Audi drive select, Audi smartphone interface, Audi Virtual Cockpit - 10.25" display, Bluetooth interface, Camera based traffic sign recognition, Lane departure warning including emergency assist, MMI Navigation Plus with high resolution 11.6 inch touchscreen colour display, Power operated tailgate with sensor controlled release, Progressive steering, Rear view camera, Swerve assist and turn assist, 11KW onboard charger, 175kW DC charging capability, AC and DC charging access point positioned on driver's side rear, Control unit with household plug and charging cable, Mode 2, Type 2 / G (10A), Mode 3 type 2 AC charging cable 22kW, Sport suspension, 2 USB-C ports with charge and data functions, DAB Digital radio, Audi rings and model badging in black (with powertrain designation removed), Black roof rails, Contrast bumpers in Manhattan grey, Electrically adjustable/heated/folding/dimming door mirrors with kerb view includes integrated LED indications + kerb view function for passenger side, Frameless auto dimming interior rear view mirror, Heat insulating glass windscreen, Heated rear window, LED 3rd brake light, LED daytime running lights, Privacy glass - dark-tinted rear window, rear door windows and rear side windows, Projection light in the exterior mirrors, e-tron logo projected from the underside of the exterior mirror onto the ground, Rear side wing doors, Rear wiper, S Line badges on the front wings, S line exterior styling, Single frame grille with a structured, closed surface within an octagonal shape, 3 seat bench in 2nd row, 3 zone automatic air conditioning, 4 way electric lumbar support for driver and front passenger, 40/20/40 split folding rear seat bench, Accent surfaces in gloss black - centre console control panel, switch panel and trim on front doors in gloss black, Black carpets, Black cloth headlining, Comfort auxiliary air conditioning, Door armrests in leatherette, Flat top and bottomed twin-spoke leather multifunction sport steering wheel with shift paddles for recuperation, Front centre armrest, Front door sill trims with aluminium inlay, illuminated with S logo, Front sport seats with integrated head restraints, Front/rear floor mats, Heated front seats, Manual seat adjustment for driver and front passenger seats, Pedals in stainless steel, Rear centre armrest with cupholders, Rear head restraints, Single front passenger seat, Ambient lighting plus pack - Q4 E-tron, Black styling pack plus - Q4 E-tron, Non smoking pack - Q4 E-tron, Technology pack - Q4 E-tron, 3x3 point rear seatbelts, Acoustic vehicle alerting system, Convenience key with safelock, Driver and front passenger airbag with passenger airbag deactivation, Electric child locks, First aid kit with warning triangle and vests, Front side airbags with head airbag system and front interaction airbag, i - Size child seat mounting on the front passenger side and i - Size and top tether on the outer rear seats, Pre-sense front with pedestrian and cyclist detection, Rear seat occupant reminder for child presence detection, Seat belt monitoring, Tyre pressure loss indicator, Anti theft alarm, Anti-theft wheel bolts, Keyless Go, Aluminium look interior elements, Black dashboard, 21" 5 arm rotor evo Audi Sport alloy wheels in matt grey, gloss turned finish and tyre seal technology, Vehicle tool kit

Features

- Anti theft alarm
- Anti-theft wheel bolts
- Keyless Go

Canterbury Audi

Broad Oak Road, Canterbury, Kent, CT2 7BE United Kingdom

01227 934107



Opening Hours

Monday	08:30 - 18:00
Tuesday	08:30 - 18:00
Wednesday	08:30 - 18:00
Thursday	08:30 - 18:00
Friday	08:30 - 18:00
Saturday	08:30 - 17:00
Sunday	10:30 - 16:30

Every effort has been made to ensure the accuracy of the information above, however, errors may occur. Do not rely entirely on this information but check about items which may affect your decision to purchase.