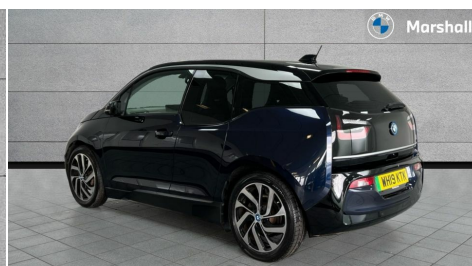


# 2019(19) BMW i3

£12,030

125kW 42kWh 5dr Auto Automatic



**Registered**  
2019(19)



**Mileage**  
33,557 miles



**Engine Size**  
N/A



**Fuel Type**  
Electric



**Transmission**  
Automatic



**Fuel Consumption**  
N/A

## Description

5.7" colour TFT Instrument cluster display - speedometer and readout, power and range information, Bluetooth hands free telephone facility with USB audio interface and audio streaming, BMW apps interface, BMW ConnectedDrive - Assist, BMW live tiles with charging, dynamic range map, integrated handbook, iDrive Touch Control with buttons, TMC information used to dynamic route plans, BMW Online services, BMW Professional Multimedia Navigation system - 10.25" LCD screen with BMW i design, dynamic route planning and 8 buttons, BMW remote services, BMW Teleservices, Connected eDrive Services, ECO PRO mode to improve range, ECO PRO+ mode to maximise the potential range (top speed 56mph) significant gains in range through a series of onboard electronic measures, Electronic display of drivetrain information and battery range and temperature, Front and rear Brake pad wear indicator, Lights on warning by audio warning signal when ignition is switched off, On board computer - average speed+fuel consumption, service interval, clock/date, odometer/trip meter, outside temperature display and ice warning, Personal profile with automatic lock when driving away selectable, preferences and favourites to a personal profile within the vehicle, Real time traffic information, Servotronic variable electric power steering (EPS), BMW eDrive motor, BMW integrated differential transmission with electronic parking lock and single forward and reverse gears, Drive performance control with ECO PRO+, ECO PRO and comfort modes, Safety battery cut-off for drive train and 12V, Auxiliary point for auxiliary devices, DAB Digital radio, Black finished door sills, Black window surrounds, Body colour front and rear bumpers, doors and door handles, Contrast highlights in BMW i Blue - Kidney grille surrounds below doors, Direction indicator side lights in exterior mirrors, Dynamic brake lights, Electrically adjustable high gloss black exterior mirror with aspheric on drivers side, convex on passenger side mirrors, Electrically folding, anti dazzle, heated memory, auto parking function, heated washer jets, electrochromatic, aspheric on passenger exterior mirrors, Flap in rear side panel, right with push function to open with C shaped indication band for battery condition integrated into central locking system, Front and rear bumper system with replaceable deformation elements, Front electric windows with open and close fingertip control, anti trap facility and comfort closing, Green tinted heat protection glazing, High gloss black bonnet, door mirrors, roof, roof mouldings with matt chrome optic highlight, tailgate with chrome optic trim, High level third brake light integrated into rear spoiler with front LED bumper, LED side mirror caps, LED rear integrated cluster behind tailgate, Integrated tailgate rear window with tempered safety glass, heated rear window, Kidney grille chrome high-gloss with contrast frame in BMW i Blue, LED direction indicator lights on front bumper, LED rear lights integrated into tailgate, Lightweight engineering with carbon fibre reinforced plastic (CFRP) body structure, Low A pillar panel, Model designation, Rain sensor with automatic windscreen wiper and headlight activation, Rear BMW i3 designation, Rear fog lights in bumper, Rear spoiler, Rear view mirror with automatic dipping of passenger mirror when reverse gear is selected to aid parking, Rear wiper, Reversing lights in bumper, Shark fin roof aerial, Side windows with tempered safety glass, rear static fixed windows, Visible VIN plate, 12V power socket in centre console, 50/50 split folding rear seat, Additional 12V power socket in right-hand side of boot, Additional detachable cupholder, Anthracite Velour floor mats, Cabin pre-conditioning via iDrive or BMW i Remote App, Central cupholder - additional cupholder with clip on function for centre console, Conditioned based service, DC rapid charge preparation, Electronic drive selector on steering column to select drive, reverse, neutral or park, Foldable front centre

armrest with integrated storage compartment, Front and rear four seats with individual seat designs, Front and rear grab handles in roof linings, Front and rear map pockets, Front and rear side armrests integrated into door trim, Front centre interior light over interior mirror and rear centre automatic interior light when door is opened/ignition switched off or via remote key, Front integrated seat backrest and rear height adjustable headrest for all seats, Front seat heating, Gear selector switch on steering column with control lever in chrome pearl grey with leather inserts in black and gear visual indication, Glove box with partitioned sections, Illuminated charging socket in visual display, Isofix child seat attachment for two rear seats, LED rear luggage compartment light and glove compartment lights in white, Luggage compartment access via recessed handle below tailgate, Manually adjustment steering wheel column, Multi phase AC fast charge preparation, Multi-function controls for steering wheel, Neutronic Cloth upholstery, Pre-heating for battery with active air flap control, Rear shelf cover, Single zone automatic air conditioning, Slide through light weight front seats with easy access to driver or passenger seat, Storage compartment in driver and passenger doors, Sunvisors with vanity mirrors and ticket pocket, Two folding rear seat headrests, Atelier interior world pack - i3, Extended storage pack - I3, 3 point seatbelts on all seats, front pyrotechnic belt tensioners, stopper and belt force limiters, rear coded belt buckles, Active Differential Brake (ADB-Sport) in DSC-OFF mode, Airbags - Front driver/passenger, front and rear curtain head protection, front side, manual deactivation of front passenger airbag, Anti lock braking system (ABS) with brake assist, Automatic Stability Control (ASC), BMW emergency call, Brake drying, Brake energy regeneration, Braking readiness, Cornering brake control (CBC), Crash Sensor - Activates hazard warning/interior lighting, central locking release + 12V and HV battery safety cut-off, Dynamic brake control, Dynamic stability control + (DSC+), Dynamic Traction Control - DTC, Electronic parking brake, Electronic tyre pressure monitor, Front ventilated disc brakes, Hill start assist with traction detection, Rear solid disc brakes, Seatbelt security check for driver and front passenger, Side impact protection, Twin horns, Warning triangle and first aid kit, Central locking switches for front doors, bonnet, footwell charging flap, footwell fuel filler flap and tailgate, Check control system for monitoring of lights and door/luggage compartment open warning, Locking wheel bolts, Remote control including integrated two key, Stop/start button with comfort go keyless engine start, Thatcham category 1 alarm system with remote control and engine immobiliser, BMW Mobility kit with tyre sealing system, Lightweight alloy wheels with unique streamline design, Reduced rolling resistance tyres

## Features

- Central locking switches for front doors, bonnet, footwell charging flap, footwell fuel filler flap and tailgate
- Check control system for monitoring of lights and door/luggage compartment open warning
- Locking wheel bolts
- Remote control including integrated two key
- Stop/start button with comfort go keyless engine start
- Thatcham category 1 alarm system with remote control and engine immobiliser

## Marshall BMW Scunthorpe

Old Crosby, Scunthorpe, North Lincolnshire, DN15 8PT United Kingdom

01724 249660



## Opening Hours

Monday	08:30 - 18:00
Tuesday	08:30 - 18:00
Wednesday	08:30 - 18:00
Thursday	08:30 - 18:00
Friday	08:30 - 18:00
Saturday	08:30 - 17:00
Sunday	10:30 - 16:30

Every effort has been made to ensure the accuracy of the information above, however, errors may occur. Do not rely entirely on this information but check about items which may affect your decision to purchase.