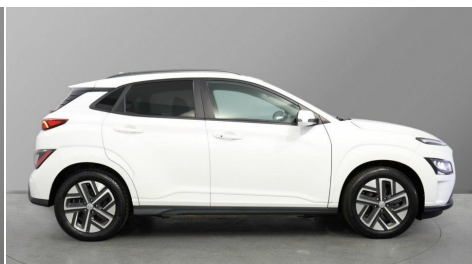


2022(22) Hyundai KONA

£15,075

150kW Premium 64kWh 5dr Auto Automatic



Registered
2022(22)



Mileage
32,383 miles



Engine Size
N/A



Fuel Type
Electric



Transmission
Automatic



Fuel Consumption
N/A

Description

10.25" touchscreen satellite Navigation with Bluelink and Mapcare, Blind spot collision avoidance assist, Bluetooth connectivity with voice recognition, Cruise control - smart adaptive speed control with stop and go function, Digital clock, Drive mode selector, Driver supervision instrument cluster with 10.25" LCD display, eCall emergency call system, Forward collision assist with pedestrian monitoring and cycle detection, Front parking sensor, Intelligent speed limit warning, Lane follow assist, Lane keep assist, Parking system with rear camera and guidance system, PAS, Phone connection with apple carPlay and android auto, Rear cross traffic collision avoidance (RCCA), Rear parking sensor, Roadside assistance, Windscreen washer fluid sensor and warning indicator, Wireless phone charging pad, 10.5 kWh 3 Phase On Board Charger, 7 pin charging cable, Battery heater, Emergency 3 pin connector charging cable (ICCB), Single speed transmission, Vehicle Stability Control (VSC), Krell premium audio system with 8 speakers and subwoofer, RDS and Digital DAB, Steering wheel mounted audio/phone controls, USB/aux input socket, 3rd brake light, Auto dimming rear view mirror, Automatic headlights with dusk sensor, Automatic windscreen wipers with rain sensor, Body colour door mirrors and handles, Door mirror integrated indicators, Electric front/rear windows with drivers one touch/anti-trap, Electrically adjustable and heated door mirrors, Full LED MFR headlights, LED daytime running lights, LED rear lights, Positioning Lights - LED, Power folding door mirrors, Privacy glass - Rear windows and tailgate, Rear side wing doors, Rear wiper, Roof rails, Solar glass with windscreen shade band, 3 seat bench in 2nd row, 60/40 split folding rear seat, Adjustable head restraints, Ambient lighting, Automatic climate control with defog system for front windscreen, CCS Combo rapid charge port (50kW), Centre interior light, Chrome interior door handles, Cloth upholstery, Door scuff plate, Driver and passenger front seat pockets, Driver's electric adjustable lumbar support, Driver's seat height adjustment, Driver's seat manual adjustment, Driver/passenger sunvisors and illuminated vanity mirrors, Front cup holders, Front interior light, Front passenger seat manual adjustments, Heated front seats, Heated steering wheel, Height/reach adjustable steering column, Leather wrapped steering wheel, Luggage compartment undertray, Rear centre console with air vents, Single front passenger seat, Sunglasses holder, USB charger in centre console, 3x3 point rear seatbelts, Airbags - front, front side and curtain airbags, Anti-lock brake system (ABS), Autonomous Emergency Braking with pedestrian recognition, Childproof rear door locks, EBD + Brake Assist, Electric parking brake, Electronic stability control, Fasten seatbelt reminder, Front seatbelt pretensioners, Height adjustable front seatbelts, Hill start assist control (HAC), Passenger airbag deactivate switch, Regenerative brake shift paddles, Tyre pressure monitoring system with individual tyre pressure display, Alarm/immobiliser, Deadlocks, Folding key, Locking wheel nuts, Remote central locking, Smart Key - Keyless entry with Power On/Off button, 17" Alloy wheels, Tyre repair kit

Features

- Alarm/immobiliser

- Deadlocks
- Folding key
- Locking wheel nuts
- Remote central locking
- Smart Key - Keyless entry with Power On/Off button

Marshall Hyundai Gatwick

Fleming House, Fleming Way, Crawley, West Sussex, RH10 9JY United Kingdom

01293 832811



Opening Hours

Monday	08:30 - 18:00
Tuesday	08:30 - 18:00
Wednesday	08:30 - 18:00
Thursday	08:30 - 18:00
Friday	08:30 - 18:00
Saturday	08:30 - 17:00
Sunday	10:30 - 16:30

Every effort has been made to ensure the accuracy of the information above, however, errors may occur. Do not rely entirely on this information but check about items which may affect your decision to purchase.