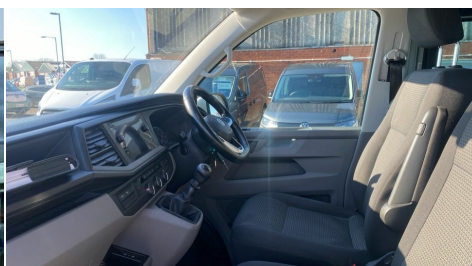


# 2020(69) Volkswagen Transporter

£20,980 + VAT

2.0 TDI 150 Highline Kombi Van 2l Manual



**Registered**  
2020(69)



**Mileage**  
80,873 miles



**Engine Size**  
2 l



**Fuel Type**  
Diesel



**Transmission**  
Manual



**Fuel Consumption**  
41.5 mpg

## Description

Adaptive cruise control including speed limiter, Child seat anchors ISOFIX and top tether in 2nd row of seats, Cross wind assist, Dimmable illuminated instruments, Driver alert with black and white multi function display plus, eCall emergency system, Electromechanical speed sensitive power steering, height and longitudinally adjustable steering column, Forward collision warning front assist with autonomous emergency braking, Front assist with autonomous emergency braking, Headlight range control, Mobile phone interface, Without voice control, 2 USB interfaces type C in dashboard, 4 speakers with 2 tweeters and 2 woofers, Composition colour radio with 6.5" touchscreen, Digital radio reception (DAB+), Volkswagen app connect, Body coloured bumpers, Body coloured exterior mirror housings and door handles, Front fog lamps with cornering light, Green heat insulating glass, Heated laminated windshield, Illuminated steps in passenger/load compartment, Left convex exterior mirror, Power adjustable and heated, power folding, folding possible via vehicle key exterior mirrors, Privacy glass in passenger compartment, Radiator grille with 2 chrome trims, Rear window with heated insulating glass, heated rear window wiper and washer system, Right convex exterior mirror, Tailgate closing with unlatching from the inside, Tailgate with window aperture, Transporter nameplate on the rear fender, Windshield wiper intermittent control with rain sensor for windshield wipers, Without adhesive film, Without trailer hitch, 1 waste bin in door storage compartment of the cab, 2 12V outlets in dashboard, 3 spoke leather wrapped multi function steering wheel, Additional sound deadening measures in cab and passenger compartment, Armrests for both cab seats, Auto dimming breakaway interior rear view mirror, Comfort headliner in cab, hardboard roof trim in passenger and load compartment, Dust/pollen filter, Folding grab handles and storage compartments on cab seats, reading light, Front seats on the right in 1st row of seat, Glove compartment with illumination, Grab handles on A pillar for access on driver and front passenger side, Heavy duty tool kit and jack, Interior plastic loading edge protection, Lashing rings for load restraint system, LED Interior lighting in load and passenger compartment, Medium height for vehicles with window aperture hardboard side trim panels in passenger/load compartment, Refrigerant R134a, Rubber floor covering in passenger/load compartment with loading edge protection in rear, Special interior noise suppression measures, Standard lower part dashboard in palladium, Sun visor with mirror, airbag label on front passenger sun visor, Without partition, Without seats in 3rd row of seats, Exterior pack - Transporter, Non smoker pack - Transporter, 3 point height adjustable seat belts on outer seats cab with electric pretensioners, Driver and front passenger airbag with front passenger airbag deactivation, Power operated child safety lock, Single tone horn, Warning buzzer and light for driver seat belt not fastened, Anti theft alarm system with interior monitoring in cab, backup horn and towing protection, Central locking system with radio remote control, inside system controls and safelock, Lockable wheel bolts, 16" chassis with 16" brake system, 70 L volume fuel tank, Diesel particulate filter, Electronic stability control, ABS, ASR with deactivation button, electronic diffrenetial lock, hill start assist and brake assist system, Start/stop system with regenerative breaking, 17" Devonport silver alloy wheels, Low rolling resistance tyres - 215/60

## Features

- Anti theft alarm system with interior monitoring in cab, backup horn and towing protection
- Central locking system with radio remote control, inside system controls and safelock
- Lockable wheel bolts

## Marshall Volkswagen Van Centre Bridgwater

191 Bristol Road, Bridgwater, Somerset, TA6 4BJ United Kingdom

01278 401869



## Opening Hours

Monday	08:30 - 18:00
Tuesday	08:30 - 18:00
Wednesday	08:30 - 18:00
Thursday	08:30 - 18:00
Friday	08:30 - 18:00
Saturday	08:30 - 17:00
Sunday	12:00 - 16:30

Every effort has been made to ensure the accuracy of the information above, however, errors may occur. Do not rely entirely on this information but check about items which may affect your decision to purchase.