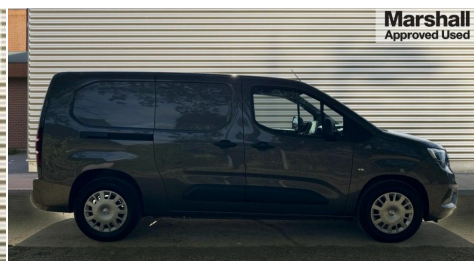


2022(22) Vauxhall Combo Cargo

£13,500 + VAT

2300 100kW Sportive 50kWh H1 Van Auto Automatic



Registered
2022(22)



Mileage
7,029 miles



Engine Size
N/A



Fuel Type
Electric



Transmission
Automatic



Fuel Consumption
N/A

Description

Central fascia display with audio information, digital clock, outside temperature with ice warning and additional features about infotainment system, Centrally located instrument cluster with service due indicator and trip computer data, Cruise control with speed limiters, Drive mode selector, Instrumentation Speedometer, rev counter, fuel gauge with low fuel warning light and water temperature gauge warning light, Lights on audible warning, Multi-function trip computer with trip mileage, vehicle range, average speed, average and instantaneous fuel economy, Single-speed electronic drive selector, Speed sensitive electric power assisted system, Steering wheel mounted audio controls, Automatic lighting control, Black door handles, Black door mirrors, Body colour front and rear bumpers, Daytime running lights, Electrically operated front windows with safety autoreverse one touch facility, Front fog lights, Glazed tailgate with heated window and wash/wipe facility, Hazard warning lights, Magic wash system, Manual headlight beam levelling, Rear fog lights, Reversing lights, Side protection moulding, Solar heat absorbing windscreen, Tinted windows, Twin electrically adjustable, heated door mirrors and manually folding door mirrors, Two speed windscreen wipers with variable intermittent wipe, 12 volt electrical accessory socket centre console, 6 way adjustable height and reach drivers seats with manual lumbar adjustment and armrest, Cab heating system with six speed fan, Illuminated controls, four adjustable fascia vents, windscreen demist vents and side window demist vents, Driver and front passenger sun visor and vanity mirror on rear of drivers sunvisor, Driver's top lidded glovebox, Fabric upholstery, Full width overhead storage shelf with ambient lighting, Large open storage pocket behind infotainment screen, Mistral grey fabric side bolsters, Open storage compartment below glovebox, Reach and rake adjustable steering column, Six Fixed floor mounted load restraint lashing eyes, Small open storage compartment behind gear lever, Two drinks holders in centre console on front compartment, Two fascia mounted drinks holders on front compartment, Two large and two small open door pockets, Deactivation switch for front passenger airbag and side impact airbag, Drivers and front passengers lap belt pretensioner system, Energy absorbing steering column, Side impact protection beams, Reinforced passenger safety cell and front and rear deformation zones, Front body lock diagonal seatbelt pretensioner system, Front seatbelt force limiters, Height adjustable front seatbelts, 2 folding keys with integral remote control function, Central locking activation switch on drivers door, Electronically protected audio, Engine deadlock immobiliser, Remote central locking and deadlocks, Remote control ultrasonic security alarm system, Visible Vehicle Identification Number (VIN), Anti-lock braking, Anti-roll bar, Corner stability control, Electronic brake force distribution, Electronic stability programme, Energy recuperation, Engine drag torque control, Hill start assist, Independent MacPherson front suspension with gas pressure dampers and linear-rate coil springs, Onboard charger - 7kW, Rear torsion beam with gas pressure dampers and variable rate coil springs, Single foot driving experience, Traction control, 16" steel wheels with full-diameter wheel trims

Features

- 2 folding keys with integral remote control function
- Central locking activation switch on drivers door
- Electronically protected audio
- Engine deadlock immobiliser
- Remote central locking and deadlocks
- Remote control ultrasonic security alarm system
- Visible Vehicle Identification Number (VIN)

Marshall Peugeot Cambridge

699 Newmarket Road, Cambridge, Cambridgeshire, CB5 8SQ United Kingdom

01223 636741



Opening Hours

Monday	08:30 - 18:00
Tuesday	08:30 - 18:00
Wednesday	08:30 - 18:00
Thursday	08:30 - 18:00
Friday	08:30 - 18:00
Saturday	08:30 - 17:00
Sunday	10:30 - 16:30

Every effort has been made to ensure the accuracy of the information above, however, errors may occur. Do not rely entirely on this information but check about items which may affect your decision to purchase.